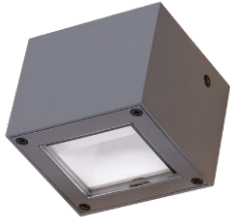


WALL MOUNTING LANDSCAPE LIGHT



MODEL: MS7AA0137-1x3W

Introduction

Wall mounting landscape light is the recessed mounting luminaire for indoor/outdoor use. The manufacture process is extremely strict, high quality output with CE, ROHS certified. Its excellent light brings comfort and good experience to the users.

Feature

- Housing and front cover 12# aluminum with anti-corrosion powder coated, T=60-80µm. Adhesion of ISO class 1/ASTM class 4B.
- Light window UVstop & fireproof PC T=6mm.
- Gasket tooling shaped seal.
- LED driver main voltage AC100V-240V driver inside builded.
- Power cable outside of luminaires H05RN-F 2x1.0mm² L=0.3m (DC24V), H05RN-F 3x1.0mm² L=0.3m (AC120/240V).
- Warranty 3 years.

Application area

- Applied to facade of building, hotel, resort, etc.

Mounting type

- Surface mounting.

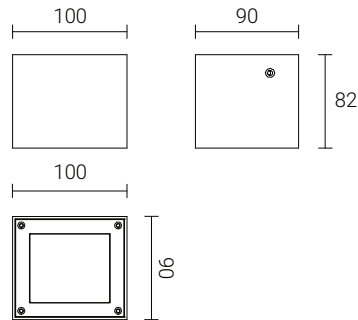
Approval and marking



Product color



Dimension: (mm)



Feature



Beam angle

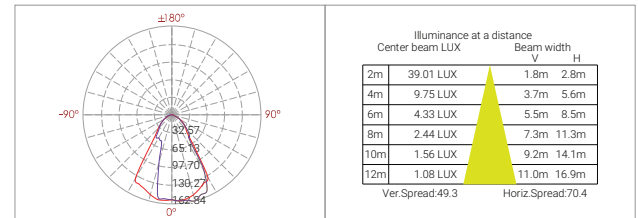


Technical information

• Model	: MS7AA0137-1x3W
• Led chip	: LED COB NICHIA
• Rated power	: 1x3W
• Luminous flux	: 155lm
• Luminous efficacy	: 51.7lm/W
• Input voltage	: DC24V/AC120/240V 50/60Hz
• Color temperature	: 2700K/3000K/4000K/5700K/6500K
• Beam angle	: 120°
• Control method	: On/off, Triac, PWM, 1-10V, Dali
• Protection grade	: IP65
• IK rating	: IK06
• Operating temperature	: -20°C~40°C
• Product life	: 35000 hours

Photometric data

MS7AA0137-120°



We reserve the right to make technical and design changes.

THIEN MINH MECHANICAL - ELECTRIC JSC

Head office: MESTAR Building, No. 98/11 Ung Van Khiem Street, Ward 25, Binh Thanh District, Ho Chi Minh City, Vietnam

Tel: (84) 28.3899 4790 - Email: mestar@mestar.vn - Web: www.mestar.vn

