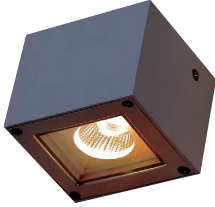


# WALL MOUNTING LANDSCAPE LIGHT



**MODEL: MS7AA0137-1x3W**

### Introduction

Wall mounting landscape light is the recessed mounting luminaire for indoor/outdoor use. The manufacture process is extremely strict, high quality output with CE, ROHS certified. Its excellent light brings comfort and good experience to the users.

### Feature

- Housing and front cover 12# aluminum with anti-corrosion powder coated, T=60-80µm. Adhesion of ISO class 1/ASTM class 4B.
- Light window UVstop & fireproof PC T=6mm.
- Gasket tooling shaped seal.
- LED driver main voltage AC100V-240V driver inside builded.
- Power cable outside of luminaires H05RN-F 2x1.0mm<sup>2</sup> L=0.3m (DC24V), H05RN-F 3x1.0mm<sup>2</sup> L=0.3m (AC120/240V).
- Warranty 3 years.

### Application area

- Applied to facade of building, hotel, resort, etc.

### Mounting type

- Surface mounting.

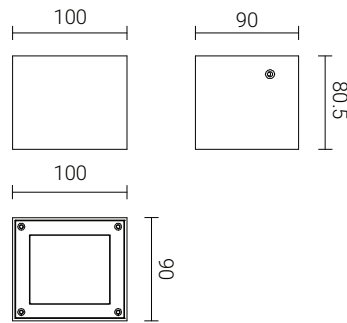
### Approval and marking



### Product color



### Dimension: (mm)



### Feature



### Beam angle

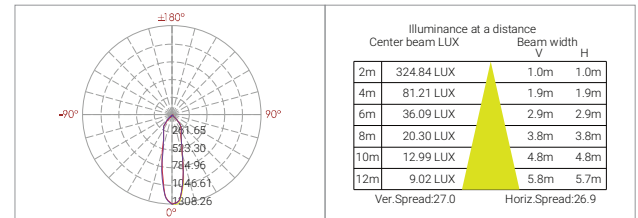


### Technical information

• Model	: MS7AF0126-1x6W
• Led chip	: LED COB NICHIA
• Rated power	: 1x6W
• Luminous flux	: 745lm (cool white), 651lm (warm white)
• Luminous efficacy	: 124.2lm/W (cool white), 108.5lm/W (cool white)
• Input voltage	: DC24V/AC120/240V 50/60Hz
• Color temperature	: 2700K/3000K/4000K/5700K/6500K
• Beam angle	: 25°
• Control method	: On/off, Triac, PWM, 1-10V, Dali
• Protection grade	: IP65
• IK rating	: IK06
• Operating temperature	: -20°C~40°C
• Product life	: 35000 hours

### Photometric data

MS7AA0137-120°



We reserve the right to make technical and design changes.

THIEN MINH MECHANICAL - ELECTRIC JSC

Head office: MESTAR Building, No. 98/11 Ung Van Khiem Street, Ward 25, Binh Thanh District, Ho Chi Minh City, Vietnam

Tel: (84) 28.3899 4790 - Email: mestar@mestar.vn - Web: www.mestar.vn

