



STARLUX 3

FLOODLIGHTS AND PROJECTORS



STARLUX 3



Introduction

STARLUX 3 is modern architectural floodlight series, adopt elegant and distinctive design with long-lasting structure to fully ensure the stability and lifespan of LEDs. With multi-way rotate function of round support, spike, pole or tree mounting are available to meet various occasions demands for outdoor projects.

Features

- High pressure die-casting aluminum housing.
- High strength toughened glass.
- Surface finish with fluorine carbon spraying ensuring high corrosion resistance, resist the impact and friction.
- LED module: high-power LEDs on metal-core PCB.
- High-efficiency PMMA lens with various beam angle option.
- Adopt American CREE original LED light source, high flux output, excellent consistency of color.
- Constant current AC100-264V/AC100-305V input driver with On/Off control method or DC36V input voltage with DMX512/RDM control method.
- Single color with various temperature option: 2700K/3000K/4000K/5000K/6000K.
- Dynamic color with RGB, RGBW option have gray level reach 65,536 degree equally make the light result is more beautiful.
- Powerful DMX512 interface adopt high reliable bus connect, all has the function of automatic addressing.

Applications areas

- Facade of outdoor buildings, billboards, sculptures, garden etc.

Mounting type

- Surface mounting, spike, pole, tree mounting etc.

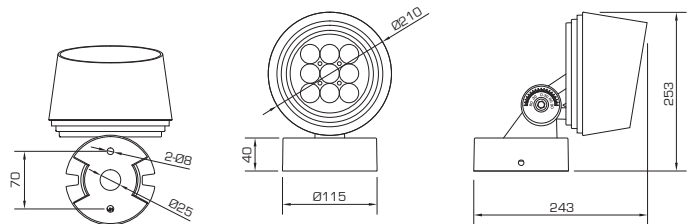
Approvals and markings



Feature

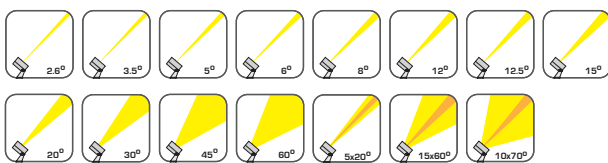


Dimension (mm)



MS3HST1136FE/D/F/C
(Flang base)

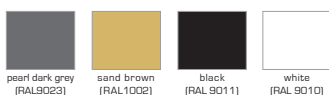
Beam angle



Color temperature

- Single**
 - 2700K
 - 3000K
 - 4000K
 - 5000K
 - 6000K
- Dynamic**
 - RGB
 - RGBW

Product color



We reserve the right to make technical and design changes.

Date: 12-03-2021

THIEN MINH MECHANICAL - ELECTRIC JSC

Head office: MESTAR Building, No. 98/11 Ung Van Khiem Street, Ward 25, Binh Thanh District, Ho Chi Minh City, Vietnam.

Tel: (84) 28.3899 4790 - Email: mestar@mestar.vn - Web: www.mestar.vn

Ha Noi Office: TT4.18, Xuan Phuong Tasco Urban Area, Xuan Phuong Ward, Nam Tu Liem District, Hanoi City, Vietnam.

Tel: (84) 24.3222 2411

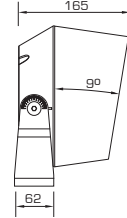
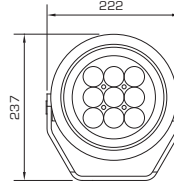
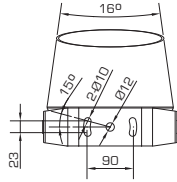


STARLUX 3

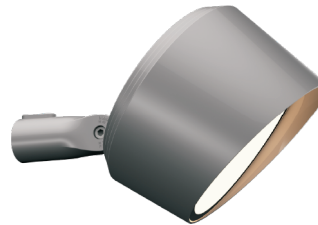
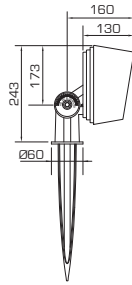
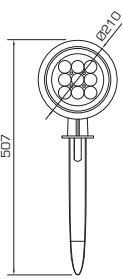
Variants



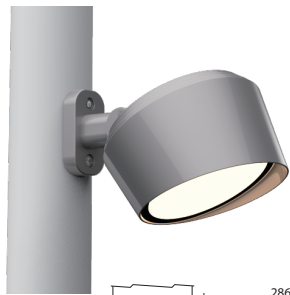
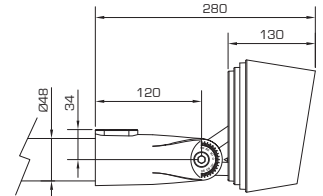
MS3HST1136UE/D/F/C
(U-shaped bracket)



MS3HST1136SE/D/F/C
(Ground spike)

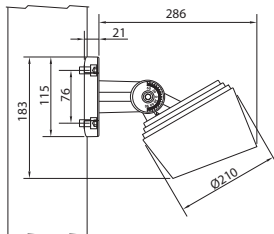


MS3HST1136ME/D/F/C
(Ø48-pole mounting part)



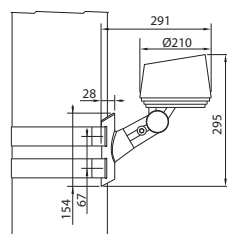
MS3HST1136LE/D/F/C
(pole mounted screw fixed part)

AVL Dia of pole (67-325)mm T≥4

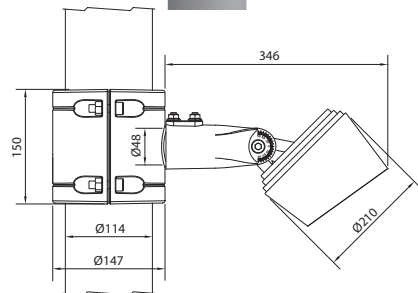


MS3HST1136HE/D/F/C
(tree bracket)

AVL Dia of pole (168-268)mm



MS3HST1136ZE/D/F/C
(Pole mounted hoop)



STARLUX 3

Specification

Model	MS3HST1136FE-45W	MS3HST1136FD-35W	MS3HST1136FF-60W	MS3HST1136FC-45W/60W
Led brand	CREE XP-L	CREE XP-G3	CREE RGBW 4 in 1	CREE XP-E2
Led quantity	9pcs	9pcs	9pcs	27pcs/30pcs
Rated power	45W	35W	60W	45W/60W
Lumen (RGB/RGBW)	/	/	2400lm (±10%)	1800lm/2400lm (±10%)
Lumen (Single)	2925lm (±10%)	2275lm (±10%)	/	/
Input voltage	AC100-264V	AC100-264V	DC36V/AC100-305V	DC36V/AC100-305V
Frequency range	50/60Hz	50/60Hz	50/60Hz	50/60Hz
Color temperature	Single	Single	RGBW	RGB
Beam angle	2.6° 3.5° 6° 12° 20° 30° 45° 60° 10x70° 5x20°		15° 20° 30° 15x60°	5° 8° 12.5° 30° 15x60°
Control method	On/Off, DALi, 0-10V	On/Off, DALi, 0-10V	DMX512/RMD	DMX512/RMD
Protection grade	IP66	IP66	IP66	IP66
Ambient temperature	-25°C~50°C	-25°C~50°C	-25°C~50°C	-25°C~50°C
Ambient humidity	10%~90%	10%~90%	10%~90%	10%~90%
Product life	50000H	50000H	50000H	50000H

Specification

Model	MS3HST1136UE-45W	MS3HST1136UD-35W	MS3HST1136UF-60W	MS3HST1136UC-45W/60W
Led brand	CREE XP-L	CREE XP-G3	CREE RGBW 4 in 1	CREE XP-E2
Led quantity	9pcs	9pcs	9pcs	27pcs/30pcs
Rated power	45W	35W	60W	45W/60W
Lumen (RGB/RGBW)	/	/	2400lm (±10%)	1800lm/2400lm (±10%)
Lumen (Single)	2925lm (±10%)	2275lm (±10%)	/	/
Input voltage	AC100-264V	AC100-264V	DC36V/AC100-305V	DC36V/AC100-305V
Frequency range	50/60Hz	50/60Hz	50/60Hz	50/60Hz
Color temperature	Single	Single	RGBW	RGB
Beam angle	2.6° 3.5° 6° 12° 20° 30° 45° 60° 10x70° 5x20°		15° 20° 30° 15x60°	5° 8° 12.5° 30° 15x60°
Control method	On/Off, DALi, 0-10V	On/Off, DALi, 0-10V	DMX512/RMD	DMX512/RMD
Protection grade	IP66	IP66	IP66	IP66
Ambient temperature	-25°C~50°C	-25°C~50°C	-25°C~50°C	-25°C~50°C
Ambient humidity	10%~90%	10%~90%	10%~90%	10%~90%
Product life	50000H	50000H	50000H	50000H

Typical order example

MS3HST1136FE	45W	C50	B20	V220	ONF	DG
Model MS3HST1136FE/D/F/C MS3HST1136UE/D/F/C MS3HST1136SE/D/F/C MS3HST1136ME/D/F/C MS3HST1136LE/D/F/C MS3HST1136HE/D/F/C MS3HST1136ZE/D/F/C	Wattage 35W 45W 60W	Color temperature C27=2700K C30=3000K C40=4000K C50=5000K C60=6000K RGB=RGB RGBW=RGBW	Beam angle B2.6=2.6° B30=30° B3.5=3.5° B45=45° B5=5° B60=60° B6=6° B5x20=5x20° B8=8° B15x60=15x60° B12=12° B10x70=10x70° B12.5=12.5° B15=15° B20=20°	Input power V36=DC36V V220=AC100-264V V220=AC100-305V	Control method ONF=On/Off DMX=DMX512 DalI=DALI 0-10V=0-10V RMD=RMD	Finish color DG=pearl dark grey (RAL9023) SB=sand brown (RAL1002) BL=black (RAL9011) WH=white (RAL 9010)

We reserve the right to make technical and design changes.

Date: 12-03-2021

THIEN MINH MECHANICAL - ELECTRIC JSC

Head office: MESTAR Building, No. 98/11 Ung Van Khiem Street, Ward 25, Binh Thanh District, Ho Chi Minh City, Vietnam.

Tel: (84) 28.3899 4790 - Email: mestar@mestar.vn - Web: www.mestar.vn

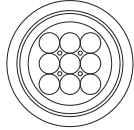
Ha Noi Office: TT4.18, Xuan Phuong Tasco Urban Area, Xuan Phuong Ward, Nam Tu Liem District, Hanoi City, Vietnam.

Tel: (84) 24.3222 2411

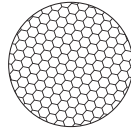


STARLUX 3

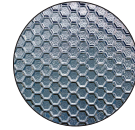
Accessories



Round-mesh grill
MA-1136-RMG



Honeycomb grill
MA-1136-HGR



Honeycomb glass
MA-1136-HGL

MS3HST1136FE-45W	•	•	•
MS3HST1136FD-35W	•	•	•
MS3HST1136FF-60W	•	•	•
MS3HST1136FC-60W	•	•	•
MS3HST1136UE-45W	•	•	•
MS3HST1136UD-35W	•	•	•
MS3HST1136UF-60W	•	•	•
MS3HST1136UC-60W	•	•	•

Connection Accessories



Connector 3 pin - IP68

MA-M684-03



T Connector 3 pin - IP68

MA-M685T-03



Y Connector - IP68

MA-M685Y-03



Junction box 3 holes - IP68

MA-M686-03

