



STARLUX 4

## FLOODLIGHTS AND PROJECTORS



# STARLUX 4



**Introduction**

STARLUX 4 is modern architectural floodlight series, adopt elegant and distinctive design with long-lasting structure to fully ensure the stability and lifespan of LEDs. With multi-way rotate function of round support, spike, pole or tree mounting are available to meet various occasions demands for outdoor projects.

**Features**

- High pressure die-casting aluminum housing.
- High strength toughened glass.
- Surface finish with fluorine carbon spraying ensuring high corrosion resistance, resist the impact and friction.
- LED module: high-power LEDs on metal-core PCB.
- High-efficiency PMMA lens with various beam angle option.
- Adopt American CREE original LED light source, high flux output, excellent consistency of color.
- Constant current AC100-305V input driver with On/Off control method or DC36V input.voltage with DMX512/RDM control method.
- Single color with various temperature option: 2700K/3000K/4000K/5000K/6000K.
- Dynamic color with RGB, RGBW option have gray level reach 65,536 degree equally make the light result is more beautiful.
- Powerful DMX512 interface adopt high reliable bus connect, all has the function of automatic addressing.

**Applications areas**

- Facade of outdoor buildings, billboards, sculptures, garden etc.

**Mounting type**

- Surface mounting, spike, pole, tree mounting etc.
- Pole installation with single side or double sides mount with different type of arm for multi-purpose application.

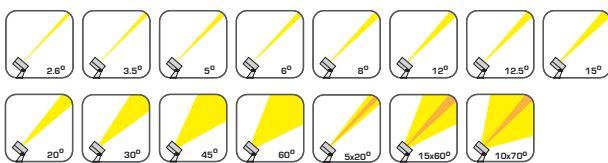
**Approvals and markings**



**Feature**



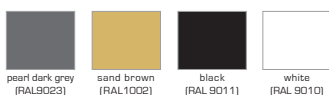
**Beam angle**



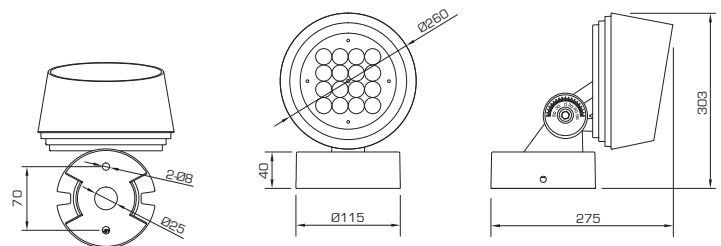
**Color temperature**

- Single**
  - 2700K
  - 3000K
  - 4000K
  - 5000K
  - 6000K
- Dynamic**
  - RGB
  - RGBW

**Product color**



**Dimension (mm)**



**MS3HST1135FE/D/F/C (Flang base)**

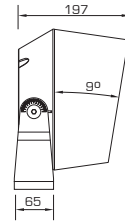
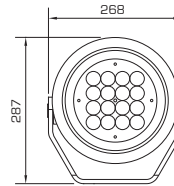
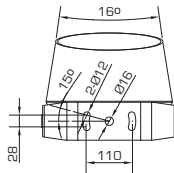


**STARLUX 4**

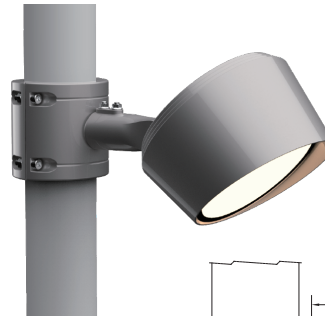
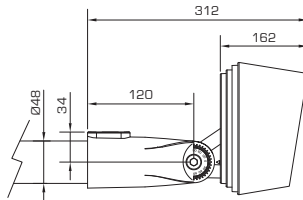
Variants



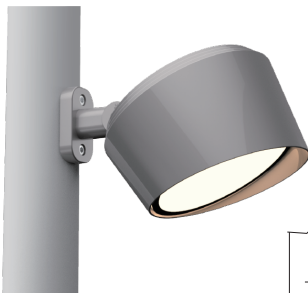
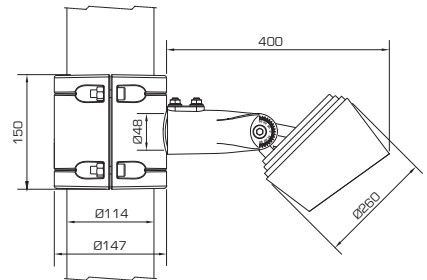
**MS3HST1135UE/D/F/C**  
(U-shaped bracket)



**MS3HST1135ME/D/F/C**  
(Ø48-pole mounting part)

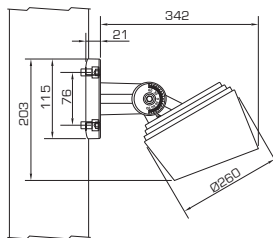


**MS3HST1135ZE/D/F/C**  
(Pole mounted hoop)



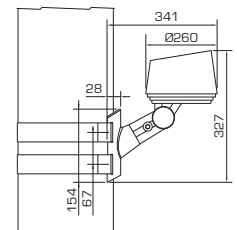
**MS3HST1135LE/D/F/C**  
(pole mounted screw fixed part)

AVL Dia of pole (67-325)mm T≥4



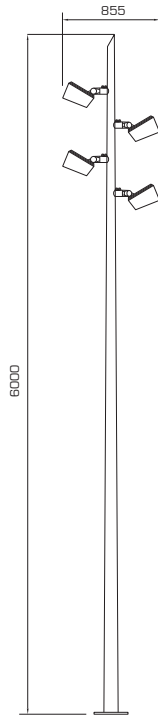
**MS3HST1135HE/D/F/C**  
(tree bracket)

AVL Dia of pole (168-268)mm

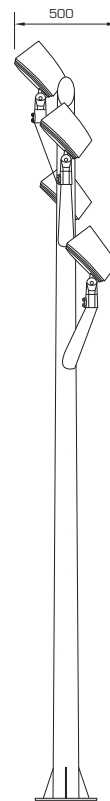
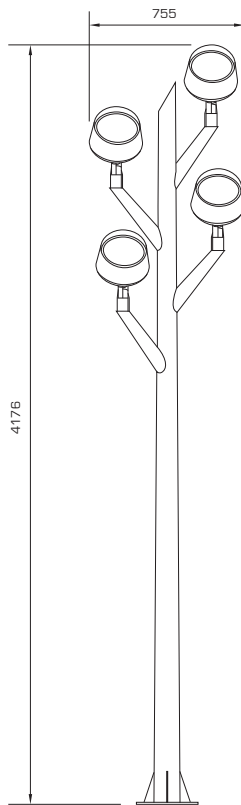


# STARLUX 4

Pole installation variants



MS3HST1135M-26-06-04



MS3HST1135F-26-06-06





# STARLUX 4

**Specification**

Model	MS3HST1135FE-75W	MS3HST1135FD-60W	MS3HST1135FF-100W/80W	MS3HST1135FC-100W
Led brand	CREE XP-L	CREE XP-G3	CREE RGBW 4 in 1	CREE XP-E2
Led quantity	16pcs	16pcs	16pcs	48pcs
Rated power	75W	60W	100W/80W	100W
Lumen (RGB/RGBW)	/	/	4000lm/3200lm(±10%)	4000lm (±10%)
Lumen (Single)	4875lm (±10%)	3900lm (±10%)	/	/
Input voltage	AC100-305V	AC100-305V	DC36V/AC100-305V	DC36V/AC100-305V
Frequency range	50/60Hz	50/60Hz	50/60Hz	50/60Hz
Color temperature	Single	Single	RGBW	RGB/RGBW
Beam angle	2.6° 3.5° 6° 12° 20° 30° 45° 60° 5x20° 10x70°		15° 20° 30° 15x60°	5° 8° 12.5° 30° 15x60°
Control method	On/Off, DALI, 0-10V	On/Off, DALI, 0-10V	DMX512/RMD	DMX512/RMD
Protection grade	IP66	IP66	IP66	IP66
Ambient temperature	-25°C~50°C	-25°C~50°C	-25°C~50°C	-25°C~50°C
Ambient humidity	10%~90%	10%~90%	10%~90%	10%~90%
Product life	50000H	50000H	50000H	50000H

**Specification**

Model	MS3HST1135UE-75W	MS3HST1135UD-60W	MS3HST1135UF-100W/80W	MS3HST1135UC-100W
Led brand	CREE XP-L	CREE XP-G3	CREE RGBW 4 in 1	CREE XP-E2
Led quantity	16pcs	16pcs	16pcs	48pcs
Rated power	75W	60W	100W/80W	100W
Lumen (RGB/RGBW)	/	/	4000lm/3200lm (±10%)	4000lm (±10%)
Lumen (Single)	4875lm (±10%)	3900lm (±10%)	/	/
Input voltage	AC100-305V	AC100-305V	DC36V/AC100-305V	DC36V/AC100-305V
Frequency range	50/60Hz	50/60Hz	50/60Hz	50/60Hz
Color temperature	Single	Single	RGBW	RGB/RGBW
Beam angle	2.6° 3.5° 6° 12° 20° 30° 45° 60° 5x20° 10x70°		15° 20° 30° 15x60°	5° 8° 12.5° 30° 15x60°
Control method	On/Off, DALI, 0-10V	On/Off, DALI, 0-10V	DMX512/RMD	DMX512/RMD
Protection grade	IP66	IP66	IP66	IP66
Ambient temperature	-25°C~50°C	-25°C~50°C	-25°C~50°C	-25°C~50°C
Ambient humidity	10%~90%	10%~90%	10%~90%	10%~90%
Product life	50000H	50000H	50000H	50000H

**Typical order example**

<b>MS3HST1135FE</b>	<b>75W</b>	<b>C50</b>	<b>B20</b>	<b>V220</b>	<b>ONF</b>	<b>DG</b>
<b>Model</b> MS3HST1135FE/D/F/C MS3HST1135UE/D/F/C MS3HST1135ME/D/F/C MS3HST1135LE/D/F/C MS3HST1135HE/D/F/C MS3HST1135ZE/D/F/C	<b>Wattage</b> 60W 75W 80W 100W	<b>Color temperature</b> C27=2700K C30=3000K C40=4000K C50=5000K C60=6000K RGB=RGB RGBW=RGBW	<b>Beam angle</b> B2.6=2.6° B20=20° B3.5=3.5° B30=30° B5=5° B45=45° B6=6° B60=60° B8=8° B5x20=5x20° B12=12° B15x60=15x60° B12.5=12.5° B10x70=10x70° B15=15°	<b>Input power</b> V36=DC36V V220=AC100-305V	<b>Control method</b> ONF=On/Off DMX=DMX512 Dali=DALI 0-10V=0-10V RMD=RMD	<b>Finish color</b> DG=pearl dark grey (RAL9023) SB=sand brown (RAL1002) BL=black (RAL9011) WH=white (RAL 9010)

We reserve the right to make technical and design changes.

Date: 12-03-2021

THIEN MINH MECHANICAL - ELECTRIC JSC

Head office: MESTAR Building, No. 98/11 Ung Van Khiem Street, Ward 25, Binh Thanh District, Ho Chi Minh City, Vietnam.

Tel: (84) 28.3899 4790 - Email: mestar@mestar.vn - Web: www.mestar.vn

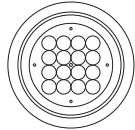
Ha Noi Office: TT4.18, Xuan Phuong Tasco Urban Area, Xuan Phuong Ward, Nam Tu Liem District, Hanoi City, Vietnam.

Tel: (84) 24.3222 2411

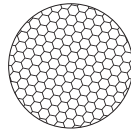


# STARLUX 4

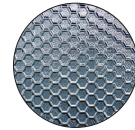
## Accessories



Round-mesh grill  
**MA-1135-RMG**



Honeycomb grill  
**MA-1135-HGR**



Honeycomb glass  
**MA-1135-HGL**

MS3HST1135FE-75W	•	•	•
MS3HST1135FD-60W	•	•	•
MS3HST1135FF-100W	•	•	•
MS3HST1135FC-100W	•	•	•
MS3HST1135UE-75W	•	•	•
MS3HST1135UD-60W	•	•	•
MS3HST1135UF-100W	•	•	•
MS3HST1135UC-100W	•	•	•

## Connection Accessories



Connector 3 pin - IP68

**MA-M684-03**



T Connector 3 pin - IP68

**MA-M685T-03**



Y Connector - IP68

**MA-M685Y-03**



Junction box 3 holes - IP68

**MA-M686-03**

