



VIVID T1

FLEXIBLE LINEAR LIGHT

We reserve the right to make technical and design changes.

Date: 22-03-2021

THIEN MINH MECHANICAL - ELECTRIC JSC

Head office: MESTAR Building, No. 98/11 Ung Van Khiem Street, Ward 25,
Binh Thanh District, Ho Chi Minh City, Vietnam.

Tel: (84) 28.3899 4790 - Email: mestar@mestar.vn - Web: www.mestar.vn

Ha Noi Office: TT4.18, Xuan Phuong Tasco Urban Area, Xuan Phuong Ward,
Nam Tu Liem District, Hanoi City, Vietnam.

Tel: (84) 24.3222 2411



VIVID T1



MODEL: **MI8SVT0606S**

Introduction

VIVID T1, the mini reliable dot-free silicon flexible linear light, vertical bend-able, offers seamless fittings built to preserve light uniformity. Engineered for on-site configuration and assembly makes VIVID T1 the definite solution for architectural accents and signage. VIVID T1 flexibility is just one of the many outstanding features which allow designers to explore organic shapes and advanced patterns, previously not possible.

Features

- Vertical bend-able.
- Unique optical light distribution structure design, uniform lighting surface and no shadow.
- High light transmittance, environmental protection grade silicone material, integrated extrusion molding process.
- Flexible and cuttable module to support design freedom.
- Long operational length per single power feed possible.
- 24V technology for easy dimensioning.
- IP67 protection level, salt solution resistance, acids & alkalis, corrosive gases, fire and UV.
- Excellent toughness, simple and stylish appearance, delicate and unique.
- Reliable connection over long periods of time: IP66/67 connector with built-in protection against liquids penetrating through the wires into the LED strip.
- Use three kinds of entry cable to meet the different installing request.
- L70/B50 > 50,000hrs.

Applications areas

- Architectural façade lighting.
- General and cove lighting.
- Glass grazing illumination.

Mounting type

- Surface mount with clips, aluminium profile.
- Suspension mount aluminium profile and rod suspend accessories.

Approvals and markings



Feature



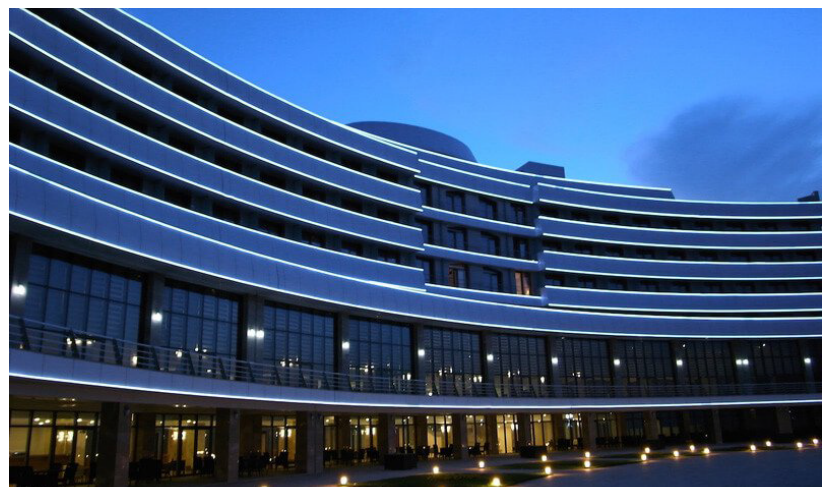
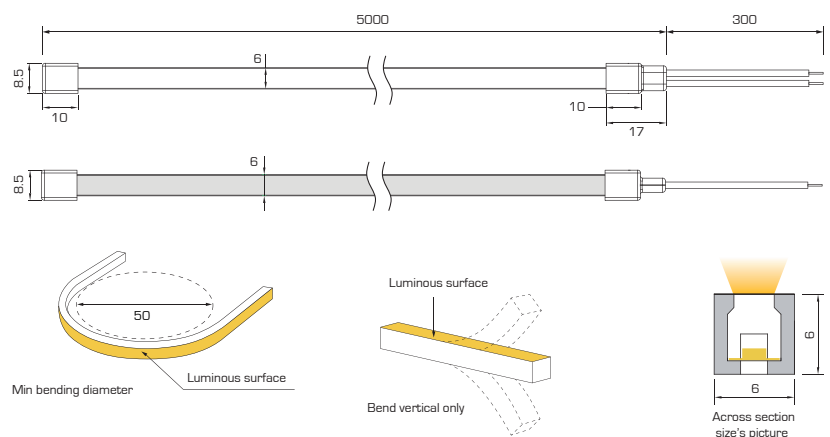
Beam angle



Color temperature

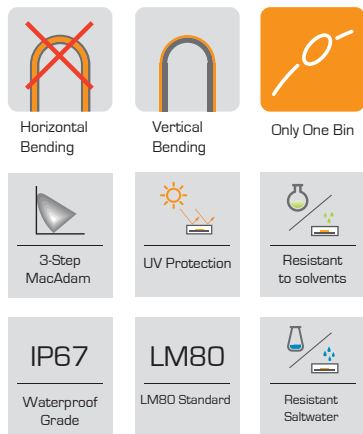
- Single
- 1700K
 - 2200K
 - 2400K
 - 2600K
 - 2800K
 - 3200K
 - 3800K
 - 4400K
 - 5600K

Dimension (mm):



VIVID T1

1. The above CRI is more 90.
2. Max series length refers to single side feed.
3. The above color temperature is the finished-product color temperature.
4. The given data are typical values due to the tolerance of the production and electrical components, output value and electrical power can very up to 10%.
5. Please don't walk on it without protection.



Technical data

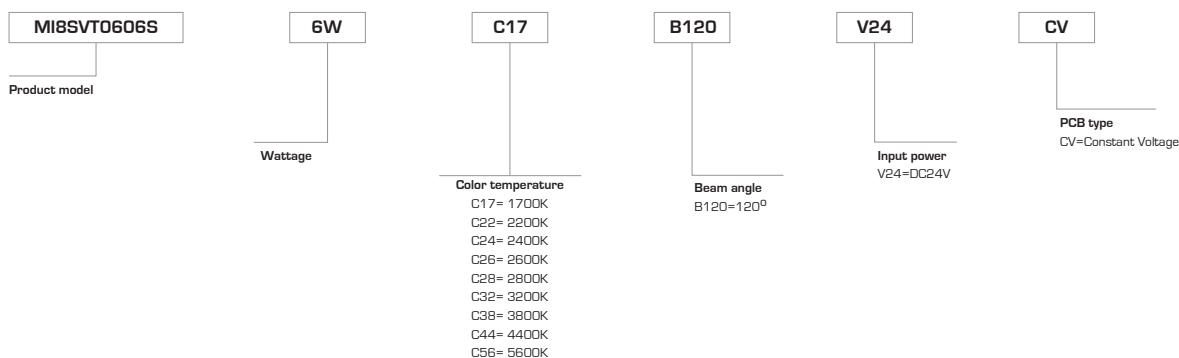
Finished CCT (K)	CRI	Power (W/m)	Lumen (LM/m)	Efficacy (LM/w)	Max.run length	Unit cut (mm)	PCB type
● 1700K ⁺²⁰⁰ ₋₁₀₀	>90	6w	235	39.2	5m	25mm	CV
● 2200K ⁺²⁰⁰ ₋₁₀₀	>90	6w	325	54.2	5m	25mm	CV
● 2400K ⁺²⁰⁰ ₋₂₀₀	>90	6w	330	55.0	5m	25mm	CV
● 2600K ⁺²⁰⁰ ₋₂₀₀	>90	6w	337	56.2	5m	25mm	CV
● 2800K ⁺²⁰⁰ ₋₂₀₀	>90	6w	345	57.5	5m	25mm	CV
● 3200K ⁺³⁰⁰ ₋₂₀₀	>90	6w	348	58.0	5m	25mm	CV
● 3800K ⁺⁴⁰⁰ ₋₃₀₀	>90	6w	358	59.7	5m	25mm	CV
● 4400K ⁺⁴⁰⁰ ₋₄₀₀	>90	6w	353	58.8	5m	25mm	CV
● 5600K ⁺⁴⁰⁰ ₋₃₀₀	>90	6w	379	63.2	5m	25mm	CV

Preferred selection

Model	MI8SVT0606S-6W
Power	6W/m
Efficacy@3200K (lm/W)	58lm/W
Color Rendering index (CRI)	> 90
Input voltage	DC24V
LED PIN temperature	Max. 65°C
Ambient temperature	- 25°C - 55°C
Storage temperature	- 25°C ~ 60°C

Due to the tolerance of the production and electrical components, output value and electrical power can very up to 10%

Typical order example



We reserve the right to make technical and design changes.

Date: 22-03-2021

THIEN MINH MECHANICAL - ELECTRIC JSC

Head office: MESTAR Building, No. 98/11 Ung Van Khiem Street, Ward 25, Binh Thanh District, Ho Chi Minh City, Vietnam.

Tel: (84) 28.3899 4790 - Email: mestar@mestar.vn - Web: www.mestar.vn

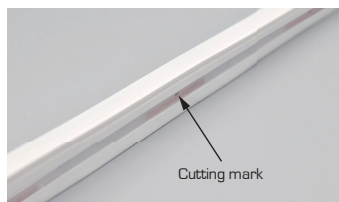
Ha Noi Office: TT4.18, Xuan Phuong Tasco Urban Area, Xuan Phuong Ward, Nam Tu Liem District, Hanoi City, Vietnam.

Tel: (84) 24.3222 2411



VIVID T1

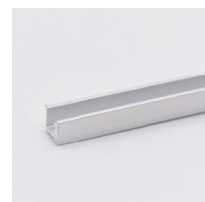
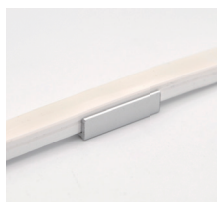
Mounting accessories



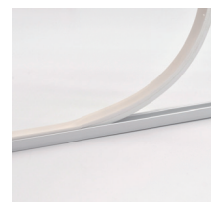
The bottom of the led strip has transparent window, the black marker is the cutting position.



Model: MA-0606S-CL
Aluminium mounting clips
20x9x8mm (L x W x H)



Model: MA-0606S-PRF
Aluminium profile
1000x9x6mm (L x W x H)



Connection Diagram

