

BAR 2

LED BATTEN LIGHT



BAR 2


Introduction

Bar 2 is the surface ceiling luminaire for indoor use. The manufacture process is extremely strict, high quality output with CE, ROHS certified. Its excellent light brings comfort and good experience to the users.

Feature

- Housing aluminum with powder coating finish and diffuser (milky white) polycarbonate (PC).
- Built-in isolated driver.
- Easier installation without installing bracket helps to save much labor cost.
- Input voltage AC85-265V 50/60Hz with on/off control method.
- Color temperature option: 3000K/4000K/5000K/6000K/6500K, Ra>80.
- Warranty 3 years.

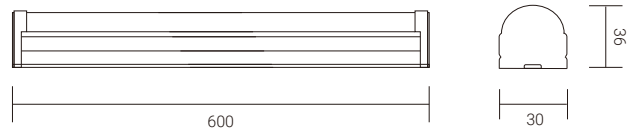
Application area

- Applied to offices, schools, subways, supermarkets, etc.

Mounting type

- Surface ceiling.

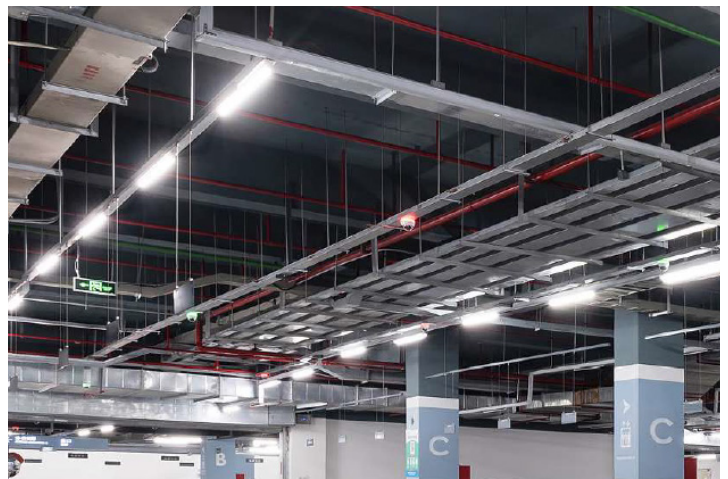
Approval and marking

Dimension (mm):

Feature

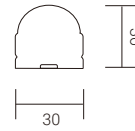
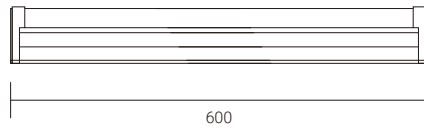
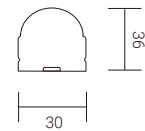
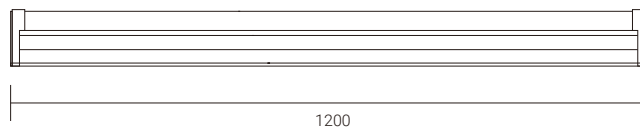
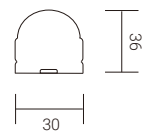
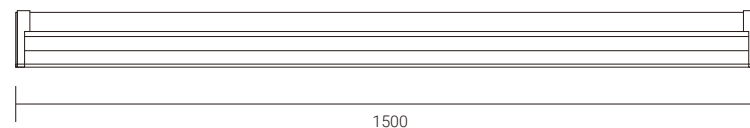
Beam angle

Color temperature

- Single
- 3000K 4000K 5000K 6000K 6500K

Product color


BAR 2

Variant

MI5SBA81Y60-10W

MI5SBA81Y90-18W

MI5SBA1Y120-22W
Specification

Model	MI5SBA81Y60-10W	MI5SBA81Y90-18W	MI5SBA1Y120-22W
Led brand	LED SMD SANAN	LED SMD SANAN	LED SMD SANAN
Rated power	10W	18W	22W
Luminous flux	1000-1500lm	1800-2700lm	2200-3300lm
Luminous efficacy	100-150lm/W	100-150lm/W	100-150lm/W
Input voltage	AC85-265V 50/60Hz	AC85-265V 50/60Hz	AC85-265V 50/60Hz
Color temperature	3000K/4000K/5000K/6000K/6500K, Ra>80	3000K/4000K/5000K/6000K/6500K, Ra>80	3000K/4000K/5000K/6000K/6500K, Ra>80
Beam angle	120°	120°	120°
Control method	On/off	On/off	On/off
Protection grade	IP20	IP20	IP20
Ambient temperature	-30°C~50°C	-30°C~50°C	-30°C~50°C
Product life	50000 hours	50000 hours	50000 hours



BAR 2**Typical order example**